

# CERTIFICATE OF LOCATION OF GOVERNMENT CORNER

**EAST QUARTER** Corner of Section 32, Township 108 N, Range 40 W, 5<sup>th</sup> P.M.

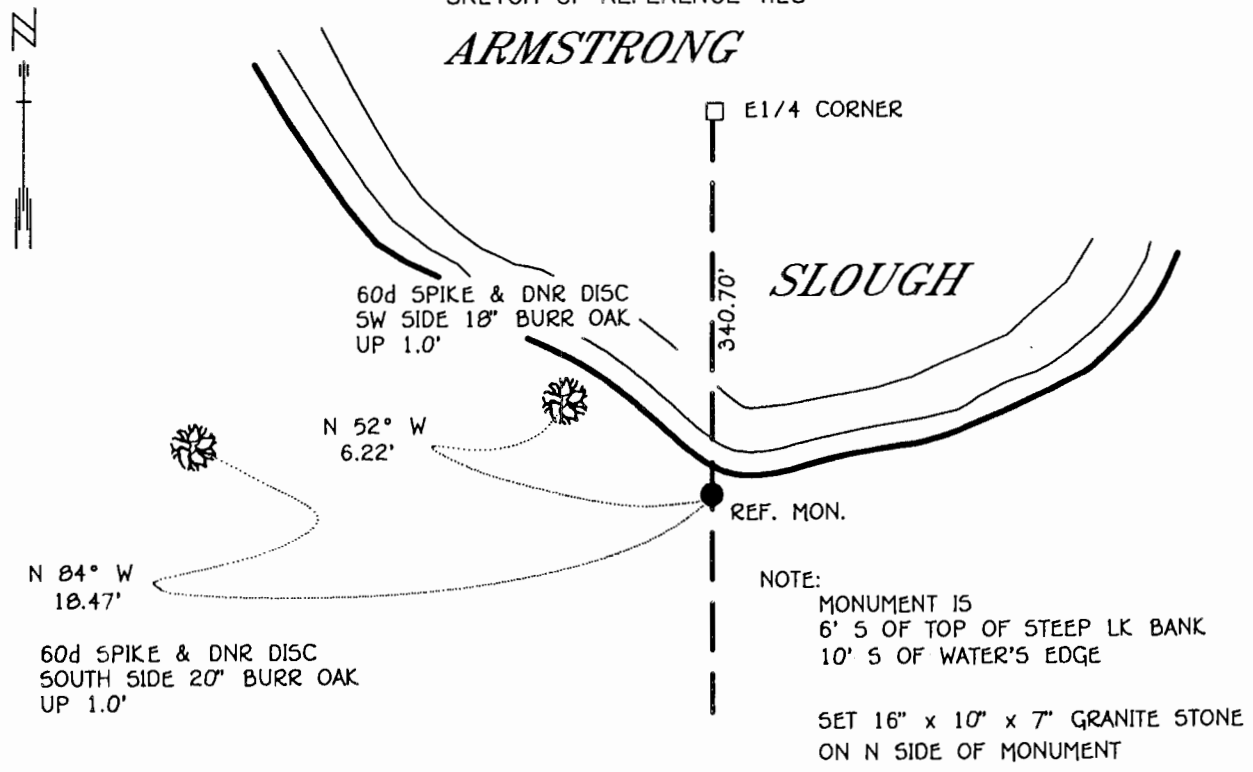
STATE OF MINNESOTA, County of MURRAY

At the corner location shown on the sketch:

- On \_\_\_\_\_ found a \_\_\_\_\_ DATE \_\_\_\_\_
- left monument as found,  lowered monument,  removed monument (explain) \_\_\_\_\_
- On 7-1-97 Placed a 3/4" x 24" REBAR WITH ALUMINUM CAP STAMPED DATE \_\_\_\_\_  
"DNR SURVEY MARKER", FLUSH, AS REF. MONUMENT

### SKETCH OF REFERENCE TIES

## ARMSTRONG



NOTE:  
 MONUMENT IS  
 6' 5" OF TOP OF STEEP LK BANK  
 10' 5" OF WATER'S EDGE

SET 16" x 10" x 7" GRANITE STONE  
 ON N SIDE OF MONUMENT

1983 MURRAY COUNTY COORDINATE SYSTEM EAST QUARTER CORNER N = 197020.097 E = 527095.902	1983 MURRAY COUNTY COORDINATE SYSTEM REFERENCE MONUMENT N = 197407.411 E = 527092.926
--	---

BEARINGS OBSERVED WITH COMPASS

Statement of evidence relative to this corner location is on back of page.

JBM JUL '97  
WA501442

I hereby certify that this document and the data contained herein was prepared by me or under my direct supervision.

Duane W. Sheppard 4/20/98  
SIGNATURE DATE

License Number 17003  
 Land Surveyor,  Professional Engineer  
 County Surveyor,  County Engineer

OFFICE OF THE COUNTY RECORDER  
County of MURRAY MAY 28 1998

I hereby certify that this document was filed in the Co. recorders office at \_\_\_\_\_ .M. on the \_\_\_\_\_ day of \_\_\_\_\_ A.D., 19\_\_\_\_  
County Recorder Jane V. Johnson  
By \_\_\_\_\_, Deputy  
DOCUMENT NO. \_\_\_\_\_

East Quarter Corner of Section 32, Township 108 North, Range 40 West

The DNR Bureau of Engineering contacted the following for survey information:

Minnesota Secretary of State's Office  
Murray County Recorder's Office  
Murray County Highway Engineer's Office  
Lyle Moseng Land Surveying of Marshall  
Rieke Carroll Muller Associates of Gaylord  
Madsen Land Surveying, Inc. of Fairmont

- 1861 U.S. General Land Office notes obtained from the Secretary of State's Office show the corner in a swamp with a witness corner set 4.00 chains (264.00 feet) South on the edge of swamp and marked with a wood post with the following bearing trees marked:  
12" Ash, South 25 1/2° East, 61 links (40.26 feet)  
12" Elm, South 42° West, 25 links (16.50 feet)
- 1877 December, the plat of the Subdivision of the Northwest Quarter of the Northwest Quarter of Section 33, obtained from the County Recorder's Office, by S.P. McIntyre, County Surveyor, does not show this corner. No distances are shown on the plat but the following note is shown:  
see field notes recorded in Surveyor's Book
- 1877 December, Surveyor's Record Book A, page 34, obtained from the County Recorder's Office, contains the field notes for the plat of the Subdivision of the Northwest Quarter of the Northwest Quarter of Section 33, by S.P. McIntyre, County Surveyor. Survey notes do not indicate what was found or set at corner. The only distances that are shown are along the north and east lines of the Northwest Quarter of the Northwest Quarter - both being 20.00 chains (1320.00 feet) long.
- 1906 Plat of Subdivision of the East Half of the Southeast Quarter of Section 32, Township 108, Range 40 obtained from the County Surveyor's Office, by J.W. Woolstencroft, County Surveyor, states that a stake was driven at this corner (northeast corner of Sublot "1"). The quarter corner is shown but no reference is made to the witness corner.
- 1997 July 1, DNR Bureau of Engineering found the area of the corner and witness corner to be in Armstrong Slough under 4 feet of water. Conducted a field search from the southeast corner of Section 32 north to the east quarter corner of Section 32 in search of occupation lines but did not find any. Computed the lost position for corner and found it to be:  
2653.42 feet from adjoining section corners

Analysis of the above information led the DNR Bureau of Engineering to conclude that the lost position marks the location of the corner. Set a DNR Survey Marker for a reference monument to corner as shown on the sketch of reference ties.